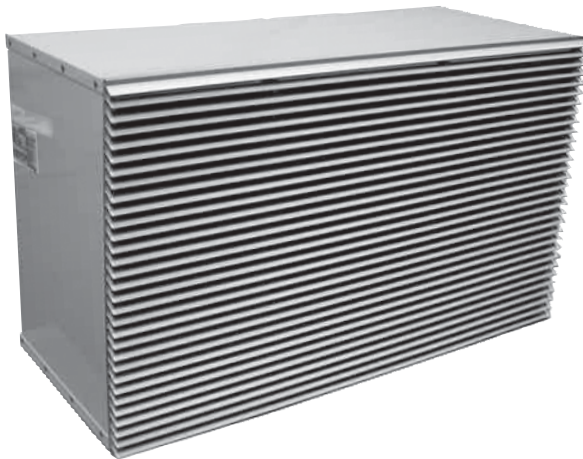


**HORIZONTAL HIGH EFFICIENCY
IN-WALL STRAIGHT COOL
CONDENSING UNITS**

P/N# 240-4367, Rev. 1.2 [06/04]

SPECIFICATIONS AND PERFORMANCE



HCH COOLING ONLY

Nominal Capacities: 24,000 and 30,000 Btuh

PRODUCT DESCRIPTION

The HCH Horizontal High Efficiency In-Wall Condensing Unit is designed as a replacement for existing in-wall installations where the original wall opening dimensions are critical or for new construction. These units are designed to match with like capacity evaporators previously supplied by Enviromaster International or other manufacturers.

Air is drawn in around the coil and is discharged through the front louver by forced air method. Architectural louver is supplied optional with each HCH. The removable back panel provides access to the compressor as well as to the fan motor and electrical box.

Please note that, due to ongoing product development, design and specifications may change on short notice. Consult the factory for current performance data.

STANDARD FEATURES

▲▼ **Materials of Construction**

- Cabinet fabricated of G-90U galvanealed steel and finished with a corrosion inhibiting beige powder coat
- Standard architectural aluminum bar louver

▲▼ **Compressor** - Hermetically sealed scroll type. Motor is PSC type with internal overload protection. Compressor is installed on resilient mountings.

▲▼ **Refrigeration Circuit** - The HCH is delivered pre-charged with refrigerant. Charging of the field installed piping and Air Handler is required. Unit refrigeration service valves are solid brass for sweat connection.

▲▼ **Coil** - Coil is seamless copper tubing arranged in staggered configuration with enhanced aluminum fins tested to 460 psig. The tubes are mechanically expanded for secure bonding to fin shoulder.

▲▼ **Blower and Motor** - The HCH uses a Propeller type fan and a direct-driven single speed motor with internal overload protection.

▲▼ **Factory Installed Controls/Components**

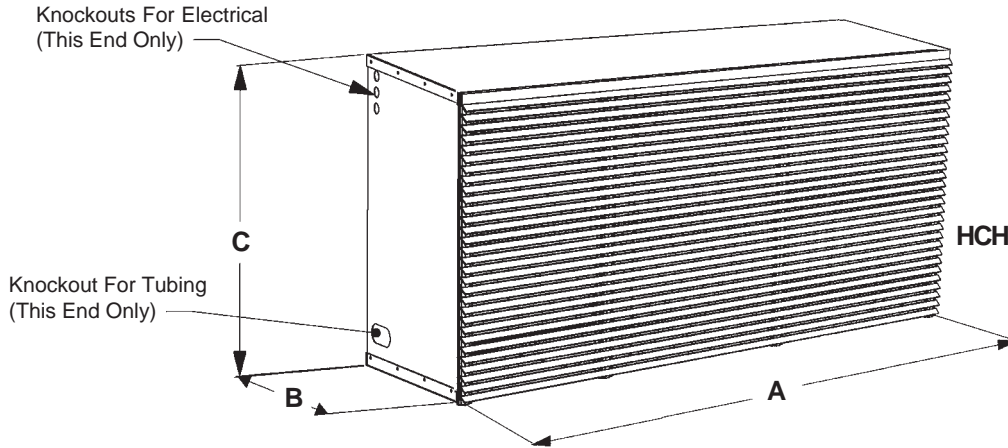
- Refrigeration connections for evaporator unit
- Compressor and fan motor contactor
- Capacitor
- Low voltage interconnection terminals
- High pressure control

▲▼ **Refrigerant Run Options** - The standard system will support refrigerant runs to the inside unit of 35' of lift, up to 100' of interconnect. Consult factory if greater run/lift interconnect is required.

HCH SPECIFICATIONS AND PERFORMANCE

NOTE: Due to ongoing development programs, design and specifications may change on short notice.

VIEW AS SEEN FROM BUILDING EXTERIOR



REFERENCE CIRCUIT RATINGS

MODEL	Btuh	SEER	SHIPPING WT.
24	24,000	10.0	120
30	30,000	10.0	150

HCH DIMENSIONS

MODEL	A	B	C
24	40"	16"	24"
30	48"	16"	24"

PIPING SPECIFICATIONS & CHARGE

MODEL	REF. LINE SIZES		REF. CHARGE OZ.
	LIQUID	SUCTION	
24	3/8"	7/8"	77
30	3/8"	7/8"	84

ELECTRICAL SPECIFICATIONS

MODEL	VOLTS/HZ/PHASE	FAN		COMP		TOTAL AMPS	MIN. VOLT	MCA	HACR BRKR
		AMPS	HP	RLA	LRA				
24DE	208/230/60/1	1.8	0.125	11.7	59	13.5	197	16.5	25
30DE	208/230/60/1	1.8	0.125	15.0	73	16.8	197	20.6	30



Enviromaster International LLC
 5780 Success Drive, Rome, NY 13440
 Phone: 1-800-228-9364
 Fax: 1-800-232-9364