

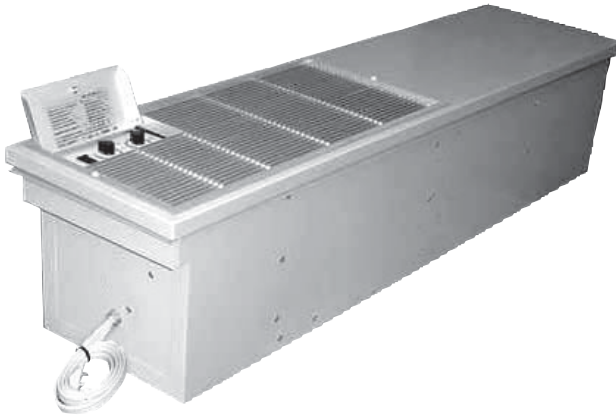
RETROAIRE

The Right Fit for Comfort

RC75 SINGLE MOTOR PACKAGED TERMINAL AIR CONDITIONER

P/N# 240004619, Rev. 1.1 [02/05]

**Replacement for:
Amana Curtain Wall Unit**



Straight Cool Only

Nominal Capacities: 9,000 & 12,000 Btuh

DESCRIPTION

The RetroAire RC75 is an air conditioner designed to allow owners of Amana Curtain Wall Unit to upgrade room comfort while reducing operating costs through higher efficiency and enhanced reliability.

The RC75 uses a high-efficiency rotary compressor protected under a 5 year warranty and an enhanced high-efficiency heat exchanger to make the replacement of worn-out and inefficient units a very attractive option.

The RC75 offers three fan speeds, and has an optional motorized fresh air feature with a positive pressure seal, override switch.

Energy efficiency ratings as high as 8.2 can mean rapid payback of your replacement investment through energy savings.

Whisper-quiet operation improves the room ambiance and a washable mesh filter makes service a snap. The 20 gauge, galvanized steel construction of the chassis ensures long service life.

All RetroAire products are backed by Enviromaster International LLC and are tested and rated in accordance with ARI Standards 310 & 380 and UL 484. A full service parts inventory is always available.

CONDENSER STANDARD FEATURES

▲ Air Systems

- Fans are forward-curved type, directly mounted to the motor shaft.
- Motor is PSC type with overheat protection.
- Air stream surfaces are insulated with ¼" fiberglass and/or 1/8" Volara™.
- Filter is removeable washable mesh.

▲ **High Efficiency Heat Exchanger** - Coil is seamless, rifled copper tubing arranged in staggered configuration with enhanced aluminum fins, tested to 400 psig. The tubes are mechanically expanded for secure bonding to fin shoulders.

▲ Condensing Section & Refrigeration Circuit

- High efficiency rotary compressor (with 5 year standard warranty).
- PSC-type condenser fan motor with overheat protection.
- Automatic expansion valve refrigerant metering for low-ambient protection.

▲ Available Features:

- Continuous/cycling fan control switch. (Standard)
- Motorized fresh air damper with positive pressure seal and override switch. (Optional)

IMPORTANT: The RC75 is designed to fit the existing wall sleeve of the old unit, when either the sleeve or the cabinet must be replaced because of rust or damage, RetroAire will supply custom replacements.

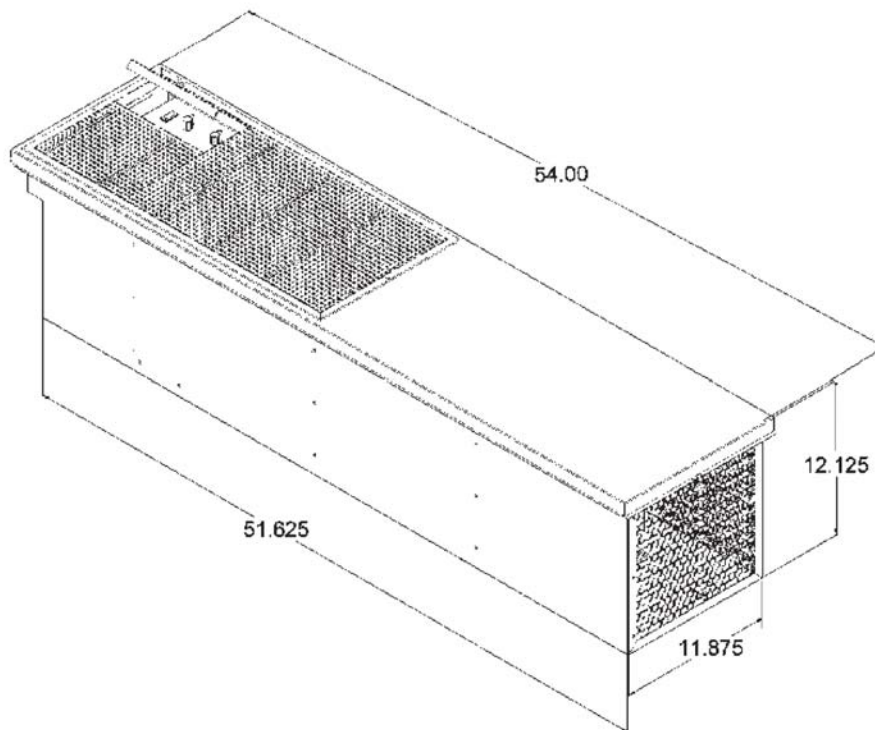
PERFORMANCE DATA*

MODEL	COOLING BTUH	EER	EVAP CFM HI/MED/LOW	FRESH AIR CFM
09	9,300	8.2	350/300/275	40/35
12	11,400	7.8	350/300/275	40/35

*Due to RetroAire's on going development programs, specifications may change without notice. Please consult factory for the latest information and submit data before making any job site updates.

RC75 SPECIFICATIONS AND PERFORMANCE

IMPORTANT: Due to ongoing product development, designs, specifications, and performance are subject to change without notice. Please consult factory for further information.



RC/RH 75 Electrical Specifications

Model Number	Voltage/hz/ph	Fan Motor		Compressor		Total amps	MCA	Max Fuse	Min Voltage	Line Cord
		FLA	Hp	RLA	LRA					
09	115/60/1	4.2	0.333	7.4	44.0	11.6	13.5	20	104	5-15P
	208/230/60/1	2.2	0.333	3.8	20.0	6.0	7.0	15	197	6-15P
12	115/60/1	4.2	0.333	9.7	54.0	13.9	16.3	25	104	5-20P
	208/230/60/1	2.2	0.333	4.8	26.3	7.0	8.2	15	197	6-15P

NEMA Specifications Non-Locking/Receptacles

	125V		250V		
	15(A)	20(A)	15(A)	20(A)	30(A)
VOLTAGE					
PLUG					
	5-15 P	5-20 P	6-15 P	6-20 P	6-30 P
RECEPTACLE					
	5-15 R	5-20 R	6-15 R	6-20 R	6-30 R

An **ECR** International Brand

ENVIROMASTER INTERNATIONAL LLC

5780 Success Dr., Rome, NY 13440

Phone: 1-800-228-9364

FAX: 1-800-232-9364

Email: info@retroaire.com



The Right Fit For Comfort

www.retroaire.com