

**CDXW  
SERIES™**

**Air Handler**  
**DX Cooling with Hot Water Heat**  
**“Cased” Horizontal Ceiling Mounted Design**

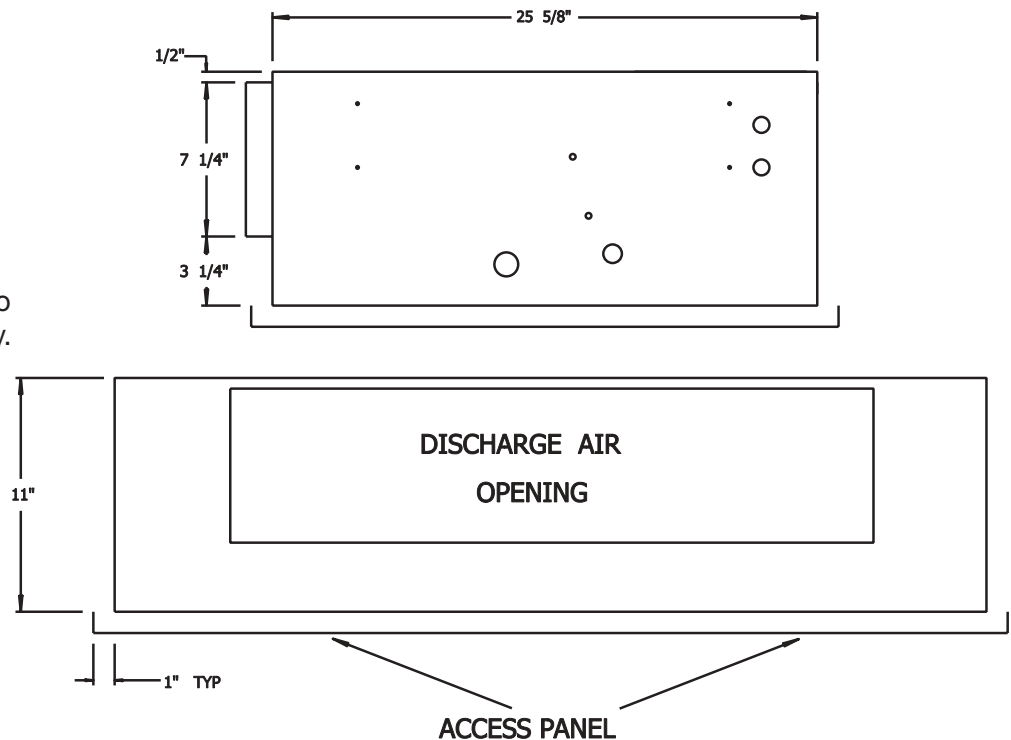
**Description:**

The CDXW Series horizontal fan coil series is designed for horizontal mounting into a furred down ceiling. This space saving CDXW series handles up to 1150 CFM of air movement, up to 3 tons of cooling and 14,400 to 51,100 hot water heat capacity. For cooling requirements, these units are designed to accept coils to match with most brands of AC condensing units. The CDXW Series are rated for 115 V and are U.L. listed.

- 115V / 1 Ph / 60 Hz.
- Space saving design.
- Galvanized steel blower wheels.
- Prewired for cooling and heating.
- 115V / 40VA transformer.
- Primary and secondary condensation drains.
- Easy access for service and maintenance.
- High efficiency copper tube / aluminum fin.

**Options:**

- Louvered access panel
- Non-louvered access panel
- Time delay relays
- 24 hour pump timer “24V” (field installed)



**Physical Dimensions:**

Model Number	Liq. Ln.	Suct. Ln.	Water Ln.	Water Rows	Evap. Rows	Motor	Length A	Depth B	Height C	Ship Cwt.
CDXW-12-17-07-0A62	3/8	3/4	(2) 5/8	2	2	1/10	41	25.625	11	75
CDXW-18-21-0A-0A69	3/8	3/4	(2) 5/8	2	3	1/6	41	25.625	11	80
CDXW-19-22-0E-0A69	3/8	3/4	(2) 5/8	2	4	1/6	41	25.625	11	85
CDXW-24-23-09-0A69	3/8	3/4	(2) 5/8	2	3	1/6	41	25.625	11	80
CDXW-30-27-0J-0A70	3/8	3/4	(2) 5/8	2	3	1/4	47	25.625	11	90
CDXW-31-28-05-0A70	3/8	3/4	(2) 5/8	2	4	1/4	47	25.625	11	95
CDXW-34-30-0K-0A70	3/8	3/4	(2) 5/8	2	3	1/4	53.5	25.625	11	94
CDXW-35-30-0K-0A70	3/8	3/4	(2) 5/8	2	4	1/4	53.5	25.625	11	100
CDXW-36-32-0K-0A70	3/8	3/4	(2) 5/8	2	3	1/4	60.5	25.625	11	105
CDXW-37-32-01-0A70	3/8	3/4	(2) 5/8	2	4	1/4	60.5	25.625	11	110

# CDXW SERIES™

## Air Handler DX Cooling with Hot Water Heat “Cased” Horizontal Ceiling Mounted Design

### Blower Data:

Unit Model	Motor H.P.	CFM vs. External Static Pressure						
		0.0	0.05	0.10	0.15	0.20	0.25	0.30
CDXW-12-17-07-0A67	1/10	800	775	750	730	704	680	655
CDXW-18-21-0A-0A69	1/6	810	785	765	740	720	700	680
CDXW-19-22-0E-0A69	1/6	910	880	855	830	805	785	765
CDXW-24-23-09-0A69	1/6	950	920	890	875	850	825	805
CDXW-30-27-0J-0A70	1/4	1180	1145	1115	1085	1055	1025	1000
CDXW-31-28-05-0A70	1/4	1160	1130	1100	1070	1040	1020	985
CDXW-34-30-0K-0A70	1/4	1256	1212	1172	1133	1084	1059	1029
CDXW-35-30-0K-0A70	1/4	1216	1172	1138	1108	1049	1024	995
CDXW-36-32-0K-0A70	1/4	1275	1230	1190	1150	1100	1075	1045
CDXW-37-32-01-0A70	1/4	1235	1190	1155	1125	1065	1040	1010

### Heating Performance Data:

Unit Model	Heating Capacities						Heating GPM	Press. Drop FT-WTR
	Entering Water Temperature							
	130° F	140° F	150° F	160° F	170° F	180° F		
CDXW-12-17-07-0A62	14,400	16,900	19,300	21,800	24,300	26,800	3.0	3.3
CDXW-18-21-0A-0A69	18,000	21,100	24,200	27,300	30,500	33,600	3.0	3.3
CDXW-19-22-0E-0A69	19,200	22,500	25,800	29,100	32,400	35,800	3.0	3.3
CDXW-24-23-09-0A69	19,300	22,700	26,000	29,400	32,700	36,100	3.0	3.3
CDXW-30-27-0J-0A70	23,700	27,800	32,000	36,000	40,100	44,300	3.0	3.7
CDXW-31-28-05-0A70	23,900	28,000	32,200	36,300	40,500	44,600	3.0	3.7
CDXW-34-30-0K-0A70	25,300	29,600	33,900	38,300	42,700	47,100	3.0	3.7
CDXW-35-30-0K-0A70	25,400	29,800	34,000	38,500	42,900	47,300	3.0	3.7
CDXW-36-32-0K-0A70	27,200	31,800	36,500	41,200	45,900	50,600	3.0	4.2
CDXW-37-32-01-0A70	27,500	32,200	36,900	41,600	46,300	51,100	3.0	4.2

Rated water temperature range, at 70° F entering air.

### Performance Data:

Unit Model	Nom. Cooling BTUH	Hot Water Heating Capacity (1)	Total Amps	Min. Circuit Ampacity	(2) Max. Fuses
CDXW-12-17-07-0A62	12,000	16,900	2.32	2.90	15
CDXW-18-21-0A-0A69	18,000	21,100	2.42	3.00	15
CDXW-19-22-0E-0A69	18,000	22,500	2.42	3.00	15
CDXW-24-23-09-0A69	24,000	22,700	2.42	3.00	15
CDXW-30-27-0J-0A70	30,000	27,800	3.82	4.80	15
CDXW-31-28-05-0A70	30,000	28,000	3.82	4.80	15
CDXW-34-30-0K-0A70	34,000	29,600	3.82	4.80	15
CDXW-35-30-0K-0A70	35,000	29,700	3.82	4.80	15
CDXW-36-32-0K-0A70	36,000	31,800	3.82	4.80	15
CDXW-37-32-01-0A70	36,000	32,200	3.82	4.80	15

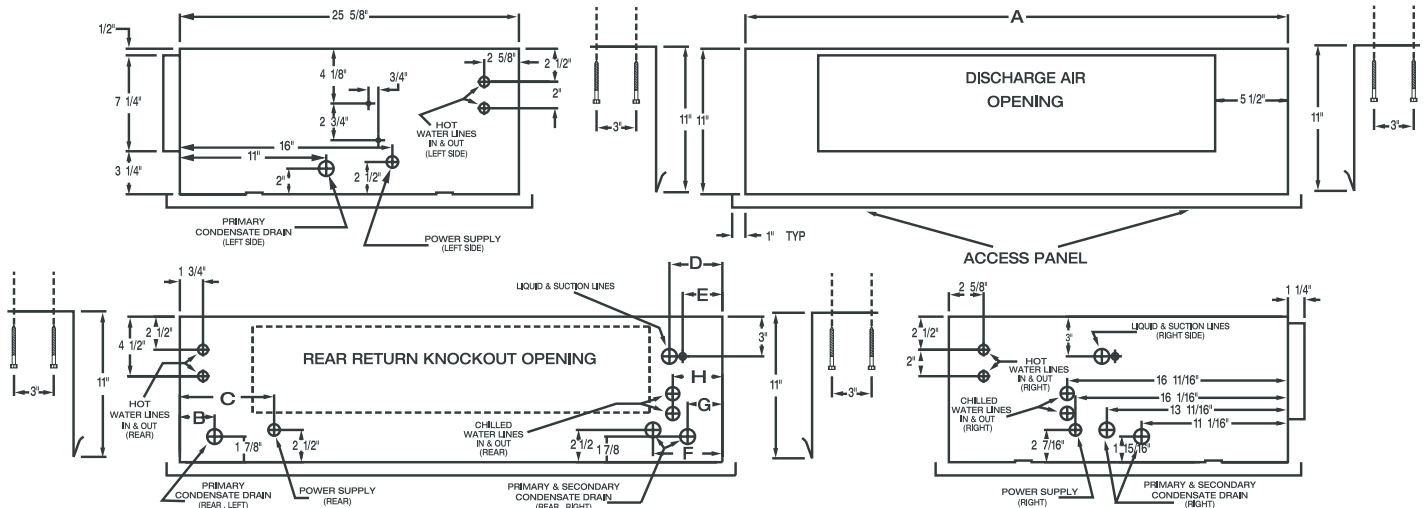
Notes: (1) All Hot Water Heating Capacities at 140° F Water Temp., 70° F Ent. Air, and 3 GPM.

(2) Maximum fuse or HACR-type circuit breaker.

# CDXW SERIES™

# Air Handler DX Cooling with Hot Water Heat “Cased” Horizontal Ceiling Mounted Design

## Dimensional Data:

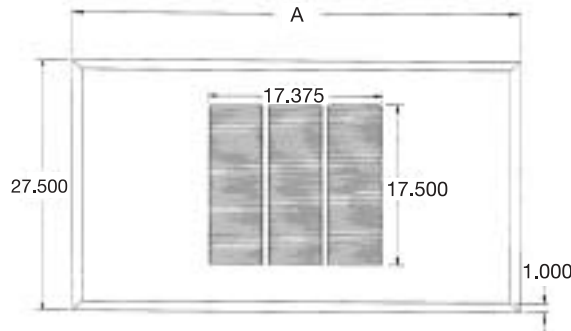


PHYSICAL DIMENSIONS								
MODEL	A	B	C	D	E	F	G	H
18 / 24	41"	2 5/8"	7 1/8"	4"	3"	5 1/4"	2 5/8"	3 3/4"
30	47"	2"	10 1/2"	2 1/2"	1 1/2"	4 5/8"	2"	2 11/16"
34 / 35	53 1/2"	3 1/4"	13 3/4"	3 1/4"	2 3/4"	5 7/8"	3 1/4"	3 15/16"
36 / 37	60 1/2"	3 1/4"	17 1/2"	3 1/4"	2 3/4"	5 7/8"	3 1/4"	3 15/16"

DISCHARGE AIR	
18/24	30" X 7 1/4"
30	38" X 7 1/4"
34/35	42" X 7 1/4"
36/37	49" X 7 1/4"

REAR RETURN KNOCKOUT OPENING	
18/24	30" X 6 1/2"
30	38" X 6 1/2"
34/35	42" X 6 1/2"
36/37	49" X 6 1/2"

All Technical Specifications Subject to Change Without Notice.



## Ceiling Access Panels

Part No.	Overall Frame Dimension	Type	SunTherm Horizontal Air Handler Models	Ship Wt.
CPL1	27-1/2 x 43 (A)	Louvered	CDXW-12, CDXW-18, CDXW-19,	18
CPNL1	27-1/2 x 43 (A)	Non-Louvered	CDXW-24	18
CPL2	27-1/2 x 49 (A)	Louvered	CDXW-30, CDXW-31	20
CPNL2	27-1/2 x 49 (A)	Non-Louvered		20
CPL3	27-1/2 x 55-1/2 (A)	Louvered	CDXW-34, CDXW-35	21
CPNL3	27-1/2x55-1/2 (A)	Non-Louvered		21
CPL4	27-1/2 x 62-1/2 (A)	Louvered	CDXW-36, CDXW-37	22
CPNL4	27-1/2 x 62-1/2 (A)	Non-Louvered		22

All Technical Specifications Subject to Change Without Notice.