

 **EMI** Presents  
**ENVIROair**

Single and Multi-Zone Ductless Inverter Split Systems

# FSR Series

## Replacement Parts Manual

Air Handler (Indoor) Models:  
FWCA

Condenser (Outdoor) Models:  
FCA

### Ordering Instructions

Order Parts through your nearest supplier.

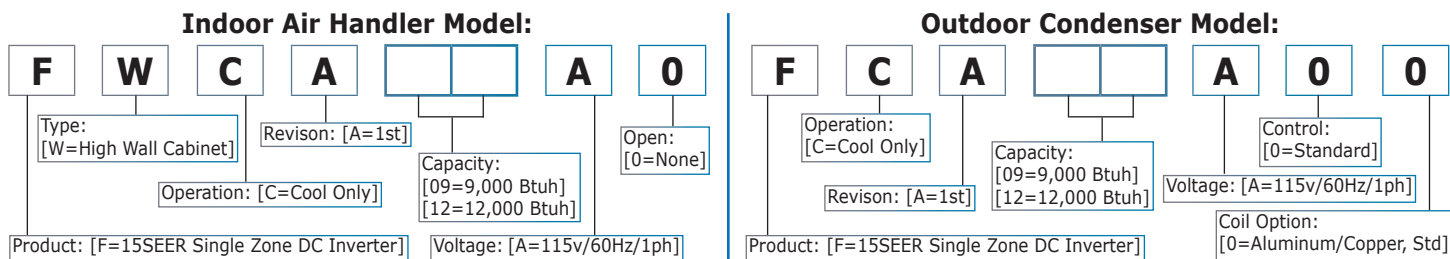
When ordering parts, obtain Model Number and Serial Number from data plate on your unit.

Include following information when ordering.

Part Number \_\_\_\_\_  
Part Description \_\_\_\_\_  
Air Handler Model Number \_\_\_\_\_  
Air Handler Serial Number \_\_\_\_\_  
Condenser Model Number \_\_\_\_\_  
Condenser Serial Number \_\_\_\_\_



## FSR Series Model Decoding



**Information and specifications outlined in this manual in effect at the time of printing of this manual. ECR International reserves the right to discontinue, change specifications or system design at any time without notice and without incurring any obligation, whatsoever.**

[EMI Limited Warranty](#) applies, 1-year parts and 5-year compressor.

# Table of Contents

## FSR Series - Active Models

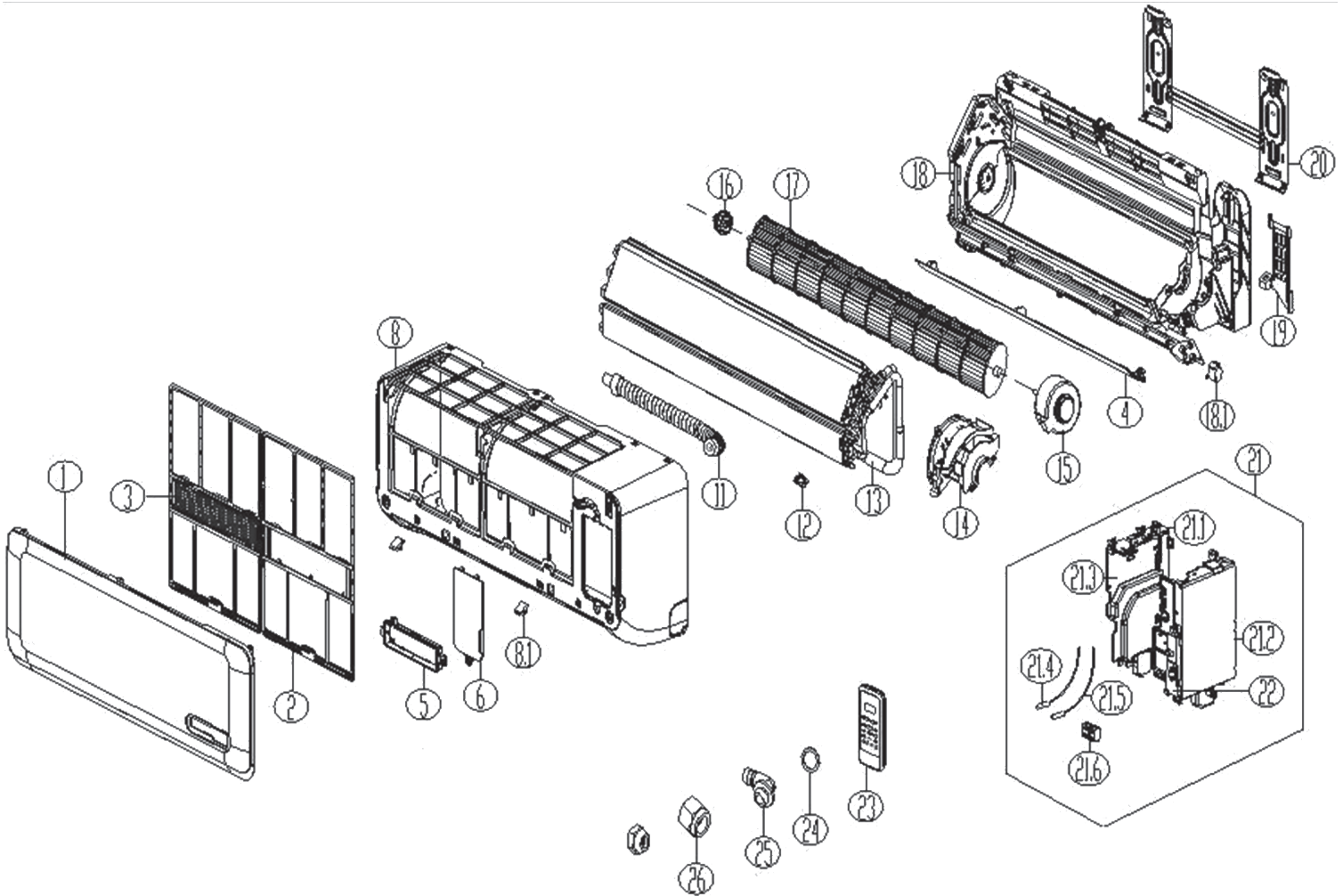
FSR Series FWCA09A0: 9,000 Btuh 115v AC-Only 15SEER High Wall Air Handler.....4

FSR Series FCA09A00: 9,000 Btuh 115v AC-Only 15SEER Single Zone Condenser .....5

FSR Series FWCA12A0: 12,000 Btuh 115v AC-Only 15SEER High Wall Air Handler .....6

FSR Series FCA12A00: 12,000 Btuh 115v AC-Only 15SEER Single Zone Condenser .....7

## FSR Series - Active Model 9,000 Btuh 115v Straight Cool FWCA09A0 High-Wall Air Handler

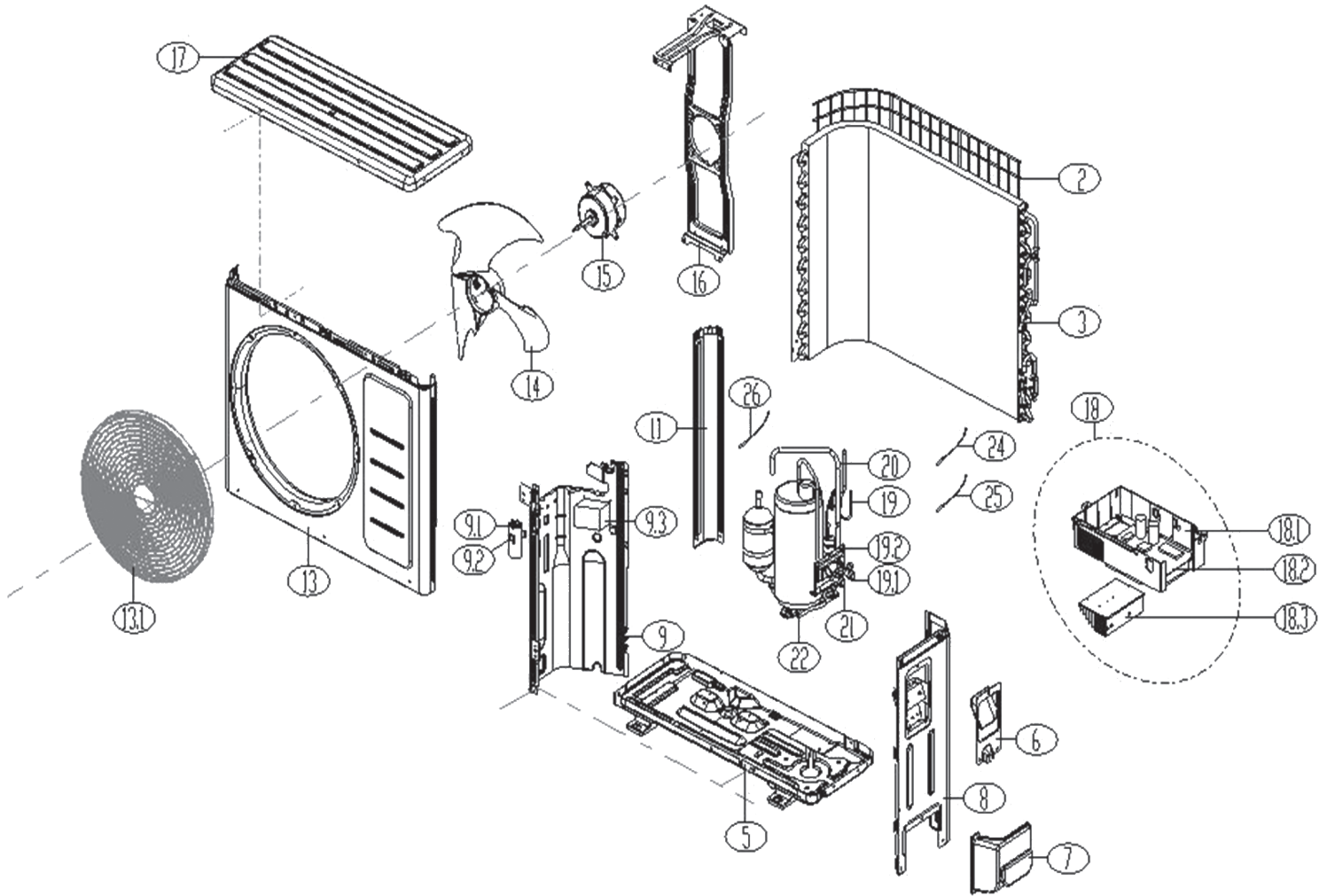


Ref#	Part Number	Description	Qty
1	201132391050	Panel assy	1
2	201132391045	Air filter	2
3	201131410703	Air cleaner	1
4	201132391046	Horizontal louver	1
5	203332590981	Display box assy	1
6	#N/A	Electronic Control Box Cover	1
8	201132391047	Panel frame assy	1
8.1	#N/A	Screw cap	2
11	201101020038	Drain hose	1
12	201102000305	Temp Sensor Fix Clamp Clip	1
13	201532390187	Evaporator assy	1
14	#N/A	Fan motor cover	1
15	202400300417	Asynchronous motor	1
16	202719900606	Bearing base	1
17	201100200050	Cross flow fan	1
18	201132391049	Chassis assy	1

Ref#	Part Number	Description	Qty
18.1	202400200031	Louver motor	1
19	201119900949	Pipe clamp board	1
20	201232390033	Installation plate	1
21	#N/A	Electronic control box assy	1
21.1	#N/A	Electronic control box I	1
21.2	#N/A	Electronic control box II	1
21.3	201332391528	Main control board assy	1
21.4	202433190000	Ambient temperature sensor assy	1
21.5	202301300584	Pipe temperature sensor assy	1
21.6	#N/A	Wire joint	1
22	#N/A	Electronic Control Box Cover	1
23	240010011	Remote Controller	1
24	202720090001	Seal ring	1
25	201101020011	Drain Connector	1
26	201600330001	Nut	1
26	201600330002	Nut	1

Items may be subject to minimum order quantity.  
#NA: Contact Factory for availability and lead time.

## FSR Series - Active Model 9,000 Btuh 115v Straight Cool FCA09A00 Single Zone Condenser

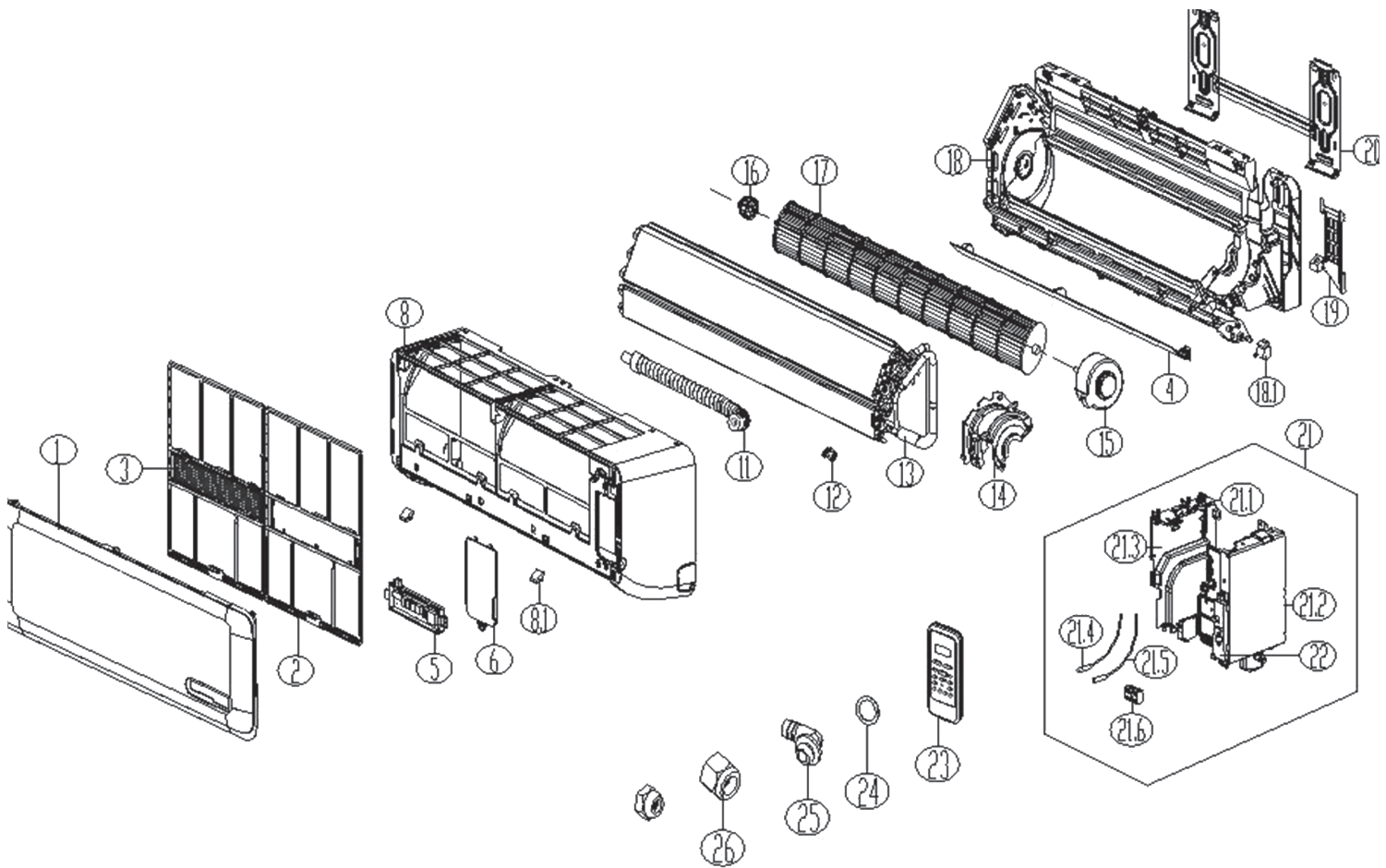


Ref#	Part Number	Description	Qty
2	#N/A	Rear net	1
3	201537390176	Condenser assy	1
5	#N/A	Chassis assy	1
6	#N/A	Big handle	1
7	#N/A	Water collector	1
8	#N/A	Right clapboard assy	1
9	#N/A	Partition board assy	1
9.1	202401090021	Compressor Capacitor	1
9.2	#N/A	Capacitor clip	1
9.3	202301000860	Reactor, choke coil	1
11	201237500180	Left Support	1
13	201237500196	Front panel	1
13.1	201137500010	Air outlet grille	1
14	201100300034	Axial flow fan	1
15	202400400990	Asynchronous motor	1

Ref#	Part Number	Description	Qty
16	#N/A	Fan Motor Support Assy	1
17	#N/A	Top cover assy	1
18	#N/A	Electronic control box assy	1
18.1	#N/A	Electronic control box	1
18.2	201337390192	Main control board assy	1
18.3	#N/A	Heat Sink	1
19	#N/A	Liquid valve assy	1
19.1	201600700076	Liquid valve	1
19.2	#N/A	Valve plate	1
20	#N/A	Suction pipe assy	1
21	201600720094	Gas valve	1
22	201400601230	Compressor	1
24	202301310075	Ambient temperature sensor assy	1
25	202301300445	Pipe temperature sensor assy	1
26	202301310068	Discharge temperature sensor assy	1

Items may be subject to minimum order quantity.  
#NA: Contact Factory for availability and lead time.

## FSR Series - Active Model 12,000 Btuh 115v Straight Cool FWCA12A0 High-Wall Air Handler



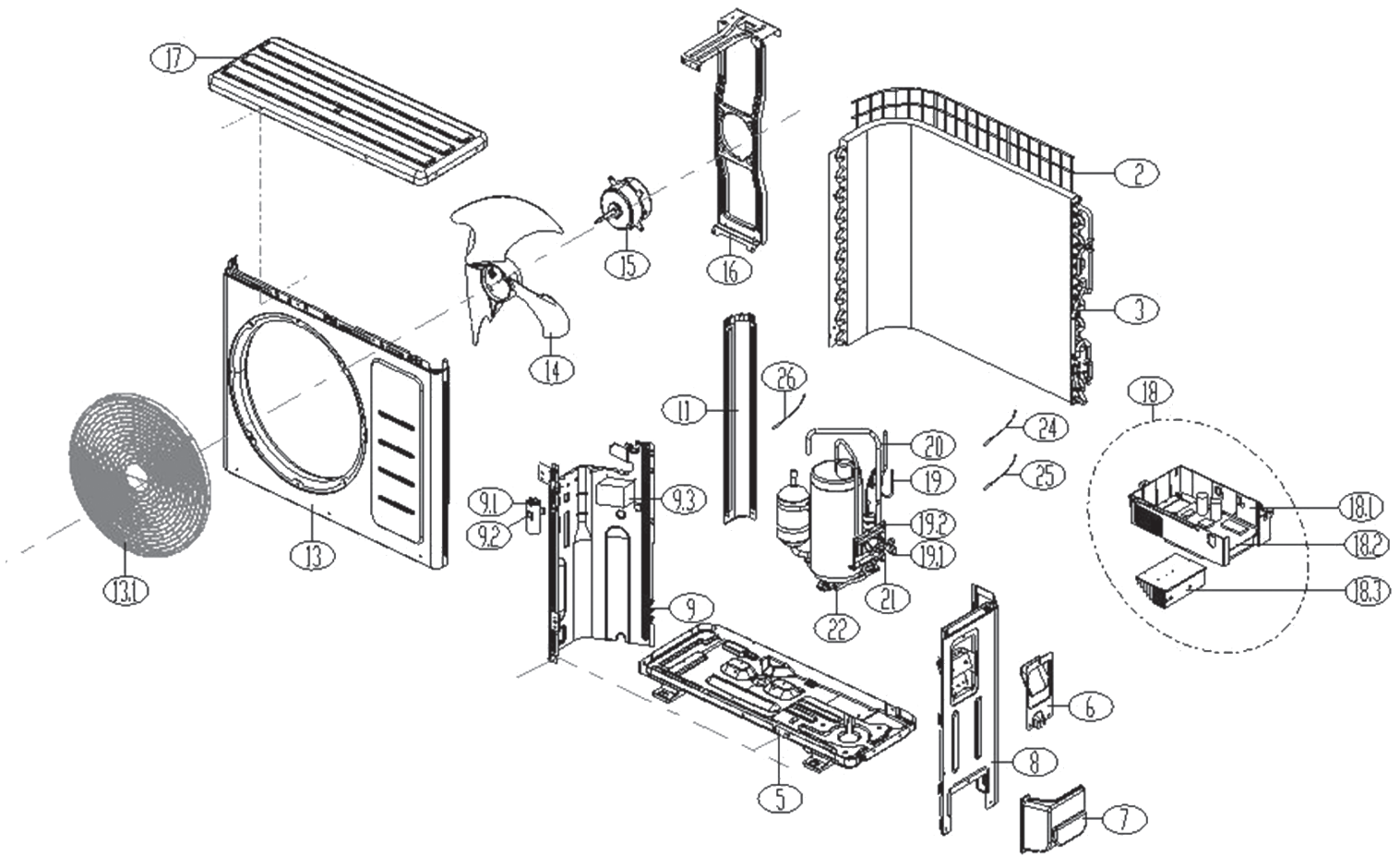
Ref#	Part Number	Description	Qty
1	201132490135	Panel assy	1
2	201132490130	Air filter	2
3	201131410703	Air cleaner	1
4	201132490131	Horizontal louver	1
5	203332590981	Display box assy	1
6	#N/A	Electronic Control Box Cover	1
8	201132490134	Panel frame assy	1
8.1	#N/A	Screw cap	2
11	201101020038	Drain hose	1
12	201102000305	Temp Sensor Fix Clamp Clip	1
13	201532490047	Evaporator assy	1
14	#N/A	Fan motor cover	1
15	202400300417	Asynchronous motor	1
16	202719900606	Bearing base	1
17	201100200051	Cross flow fan	1
18	#N/A	Chassis assy	1

Ref#	Part Number	Description	Qty
18.1	202400200031	Louver motor	1
19	201119900949	Pipe clamp board	1
20	201232490004	Installation plate	1
21	#N/A	Electronic control box assy	1
21.1	#N/A	Electronic control box I	1
21.2	#N/A	Electronic control box II	1
21.3	201332591029	Main control board assy	1
21.4	202433190000	Ambient temperature sensor assy	1
21.5	202301300584	Pipe temperature sensor assy	1
21.6	#N/A	Wire joint	1
22	#N/A	Electronic Control Box Cover	1
23	240010011	Remote Controller	1
24	202720090001	Seal ring	1
25	201101020011	Drain Connector	1
26	201600330001	Nut	1
26	201600330003	Nut	1

Items may be subject to minimum order quantity.  
#NA: Contact Factory for availability and lead time.



## FSR Series - Active Model 12,000 Btuh 115v Straight Cool FCA12A00 Single Zone Condenser



Ref#	Part Number	Description	Qty
2	#N/A	Rear net	1
3	201537591112	Condenser assy	1
5	#N/A	Chassis assy	1
6	#N/A	Big handle	1
7	#N/A	Water collector	1
8	#N/A	Right clapboard assy	1
9	#N/A	Partition board assy	1
9.1	202401090021	Compressor Capacitor	1
9.2	#N/A	Capacitor clip	1
9.3	202301000860	Reactor, Choke Coil	1
11	201237500180	Left Support	1
13	201237500196	Front panel	1
13.1	201137500010	Air outlet grille	1
14	201100300034	Axial flow fan	1
15	202400400990	Asynchronous motor	1

Ref#	Part Number	Description	Qty
16	#N/A	Fan Motor Support Assy	1
17	#N/A	Top cover assy	1
18	#N/A	Electronic control box assy	1
18.1	#N/A	Electronic control box	1
18.2	201337390192	Main control board assy	1
18.3	#N/A	Heat Sink	1
19	#N/A	Liquid valve assy	1
19.1	201600700076	Liquid valve	1
19.2	#N/A	Valve plate	1
20	#N/A	Suction pipe assy	1
21	201600720194	Gas valve	1
22	201400601230	Compressor	1
24	202301310075	Ambient temperature sensor assy	1
25	202301300445	Pipe temperature sensor assy	1
26	202301310068	Discharge temperature sensor assy	1

Items may be subject to minimum order quantity.  
#NA: Contact Factory for availability and lead time.



ECR International, Inc.  
2201 Dwyer Avenue • Utica, New York 13501  
Phone: 800.325.5279 • Web: [enviromaster.com](http://enviromaster.com)