

**Engineering Submittal and Wall Sleeve Specification Worksheet**  
**VPAC/VPHP Single Package Vertical**  
**Air Conditioner/Heat Pump 30,000-36,000 Btuh**

**VPAC/VPHP**

240007065 Rev. 1.4 [01/08]

Job Name: \_\_\_\_\_ Location: \_\_\_\_\_  
 Customer: \_\_\_\_\_  
 Project Engineer: \_\_\_\_\_  
 Project Architect: \_\_\_\_\_  
 General Contractor: \_\_\_\_\_  
 Submitted By: \_\_\_\_\_ Date: \_\_\_\_\_ For: Reference [ ] Approval [ ]

**ENGINEERING SUBMITTAL**



**STANDARD FEATURES**

The standard VPAC/VPHP unit comes equipped with the following:

- **Cooling or heat pump chassis** w/high efficiency scroll compressor
- **Custom wall sleeve**
- **Anodized aluminum outdoor louver** for field installation (optional colors available)
- **Front mounted control box**
- **Manual fresh air damper**
- **Microprocessor control board**
- **Internal Drain Connection**
- **Universal control board:** can be used in straight cool electric, hydronic heat, or cooling/heat pump applications.
- **Fan purge:** fan remains on for 60 seconds after heat/cool call is dropped ("auto" mode only)
- **Anti-short cycle compressor protection**
- **Random start timer:** prevents multiple units from simultaneous start-ups (straight cool only)
- **Freeze protection:** prevents indoor coil freeze up
- **Low ambient lockout**
- **Test operation:** all timers are eliminated to allow ease of testing after installation (straight cool only)
- **Compatible** with fossil fuel, electric heat, mercury or electronic thermostats
- **Heat Pump (VPHP)** limited range heat pumps w/HP operation to 40° F

If other than the standard features listed above are needed, customize your application by choosing from the following options.

OPTIONS	X	OPTIONS	X
• Supplemental Electric Heat 5, 7.5, 10 kW (15 kW for 36,000 Btuh)		• Return Air Access Panel w/Disposable Air Filter	
• 265/277V (Contact Factory for Availability)		• Painted Condenser Louver	
		• Remote Thermostat (Mercury Bulb or Digital)	



Engineering Submittal and Wall Sleeve Specification Worksheet
VPAC/VPHP Single Package Vertical
Air Conditioner/Heat Pump 30,000-36,000 Btuh

240007065 Rev. 1.4 [01/08]

VPAC/VPHP ORDER SPECIFICATIONS FOR ENGINEERING PURPOSES

This is very important information to make certain that equipment supplied is properly designed for the application for which it was intended!!

1. TYPE OF CONSTRUCTION: New Construction [ ] Replacement [ ]
If Replacement, what is the current model being replaced?
Manufacturer Model #

2. TYPE OF APPLICATION: Hotel/Motel [ ] Office [ ] Suites [ ] Condo [ ] Apartments [ ]
Other [ ] (Please explain)
• How many rooms are being conditioned by one unit?

3. ELECTRIC HEAT: Output or kW: Current Circuit Breaker Used: amps

4. FIELD SUPPLY VOLTAGE: 208/230 [ ] 265/277 [ ]

5. STANDARD UNIT IS EQUIPPED WITH A FRONT DRAIN STUB (for an internal drain system, refer to IOM/Spec):
Location of drain stub: Front [ ]

6. WHAT ARE THE PLANNED DIMENSIONS OF THE UNIT ENCLOSURE? L W H
(NOTE: Unit enclosure must meet minimum clearance specifications.)

7. IS ACCESS/RETURN AIR PANEL TO BE SUPPLIED? Yes [ ] No [ ]
(NOTE: Standard R/A Access Panel is supplied with a 1. disposable filter.)
If not, what will be used?
What is return air opening size? L W
What is free area of existing return air opening?

Attach sketch or photo if possible.

8. 30/36 UNITS ARE AVAILABLE IN FRONT CONTROL ACCESS ONLY: Front [ ]

9. WHAT IS DESIGNED EXTERNAL STATIC PRESSURE (E.S.P.)?
If not known, describe the supply air configuration.
Rectangular Duct [ ] L W
Circular Duct [ ] Diameter Duct Length
How many supply air diffusers?

(NOTE: Standard louver color is anodized aluminum. If special color is requested, please note there is an additional charge for special color louvers.)

# Engineering Submittal and Wall Sleeve Specification Worksheet

## VPAC/VPHP Single Package Vertical Air Conditioner/Heat Pump 30,000-36,000 Btuh

# VPAC/VPHP

240007065 Rev. 1.4 [01/08]

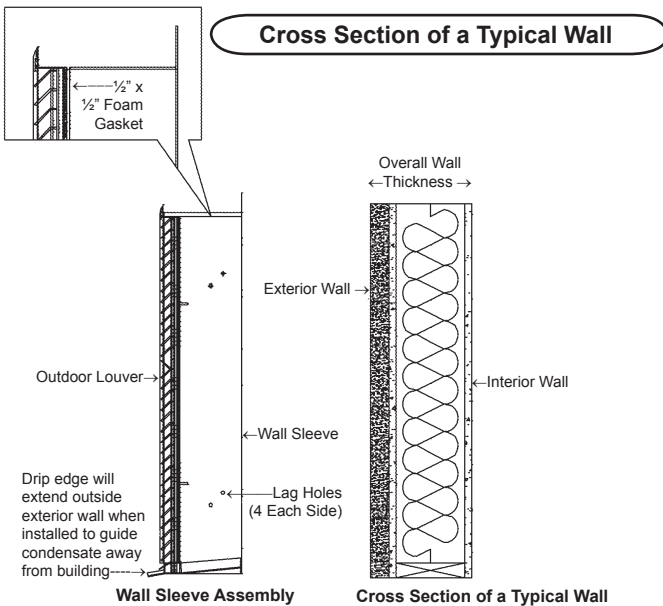
**Important Note:** You must circle or mark the specifications for:  
 • Capacity • Straight Cool or Heat Pump • Voltage • Electric Heat or Hydronic Heat

Model	Btuh		Efficiency		Electric Heat				Hydrocoil Performance						Max. HACR Breaker			Dimensions				Weight (lbs.)		
	Cooling VPAC/VPHP	Heating (VPHP)	EER VPAC/VPHP	COP (VPHP)	Heater Size	Volts	Watts	HT Amps		CFM	H <sub>2</sub> O Temp	Inlet H <sub>2</sub> O gpm (°F)	Btuh	Head Loss ft H <sub>2</sub> O	Outlet Air Temp (°F)	Outlet Water Temp (°F)	With Electric Heat		Width (in.)	Height (in.)	Depth (in.)			
								Circuit #1	Circuit #2								Circuit #1	Circuit #2			Heat Pump		Straight Cool	
30	29,400 28,800	27,400	9.0 8.7	2.6	5kw	208	4,089	19.7	-	1,000	160°	1	2,0644	.1	87°	118°	35*	35	-	28	52	21.4	24.5	245
							5,000	21.7	-	1,000	160°	2	3,2092	.4	97°	127°	35*	35	-					
						230	6,134	29.5	-	1,000	160°	3	3,6613	.8	101°	135°	35*	35	-					
							7,500	32.6	-	1,000	180°	1	2,6534	.1	92°	126°	35*	45	-					
						7.5kw	8,178	39.3	-	1,000	180°	2	3,9461	.4	104°	140°	35*	45	-					
							10,000	43.5	-	1,000	180°	3	4,4950	.8	109°	150°	35*	55	-					
					10kw	208	4,089	19.7	-	1,200	160°	1	2,1201	.1	84°	117°	40	40	-					
						230	5,000	21.7	-	1,200	160°	2	3,3645	.4	94°	126°	40	40	-					
						208	6,134	29.5	-	1,200	160°	3	3,8695	.8	97°	134°	40	45	-					
						230	7,500	32.6	-	1,200	160°	4.3	4,2668	1.7	100°	140°	40	45	-					
7.5kw	208	8,178	39.3	-	1,200	180°	1	2,7277	.1	89°	124°	40	55	-										
	230	10,000	43.5	-	1,200	180°	2	4,1390	.4	99°	138°	40	60	-										
10kw	208	12,268	19.7	39.3	1,200	180°	3	4,7531	.8	104°	148°	40*	40	50										
	230	15,000	21.7	43.5	1,200	180°	5.2	5,5245	2.8	110°	160°	40*	40	55										
	15kw	208	4,089	19.7	-	1,200	160°	1	2,1201	.1	84°	117°	40	40	-									
		230	5,000	21.7	-	1,200	160°	2	3,3645	.4	94°	126°	40	40	-									
5kw	208	6,134	29.5	-	1,200	160°	3	3,8695	.8	97°	134°	40	45	-										
	230	7,500	32.6	-	1,200	160°	4.3	4,2668	1.7	100°	140°	40	45	-										
7.5kw	208	8,178	39.3	-	1,200	180°	1	2,7277	.1	89°	124°	40	55	-										
	230	10,000	43.5	-	1,200	180°	2	4,1390	.4	99°	138°	40	60	-										
10kw	208	12,268	19.7	39.3	1,200	180°	3	4,7531	.8	104°	148°	40*	40	50										
	230	15,000	21.7	43.5	1,200	180°	5.2	5,5245	2.8	110°	160°	40*	40	55										

\*VP-30 Requires 35 amp breaker for compressor circuit

\*VP-36 Requires 40 amp breaker for compressor (circuit #1)

Performance data is subject to change without notice. For the most current unit/system performance data, please refer to the Enviromaster International listing of certified products in the ARI directory, at [www.aridirectory.org](http://www.aridirectory.org).



### WALL SLEEVE DEPTH INFORMATION

Fill In Your Information Here:

Wall Sleeve Depth \_\_\_\_\_

Company Name \_\_\_\_\_

Authorized Signature \_\_\_\_\_

Date \_\_\_\_\_

EMI Signature \_\_\_\_\_

Date \_\_\_\_\_



Tested/Rated In Accordance  
With ARI Standard 390