

Job Name: _____ Location: _____
 Customer: _____
 Project Engineer: _____
 Project Architect: _____
 General Contractor: _____
 Submitted By: _____ Date: _____ For: Reference [] Approval []

ENGINEERING SUBMITTAL



STANDARD FEATURES

The standard VPAC/VPHP unit comes equipped with the following:

- **Cooling or heat pump chassis** w/high efficiency scroll compressor
- **Custom wall sleeve**
- **Anodized aluminum outdoor louver** for field installation (optional colors available)
- **Front mounted control box**
- **Manual fresh air damper**
- **Microprocessor control board**
- **Refrigerant hot gas bypass** for operation in lower ambient conditions (cooling cycle only)
- **Internal Drain Connection**
- **Universal control board:** can be used in straight cool electric, hydronic heat, or cooling/heat pump applications.
- **Fan purge:** fan remains on for 60 seconds after heat/cool call is dropped ("auto" mode only)
- **Anti-short cycle compressor protection**
- **Random start timer:** prevents multiple units from simultaneous start-ups (straight cool only)
- **Freeze protection:** prevents evaporator freeze ups
- **Low ambient lockout**
- **Test operation:** all timers are eliminated to allow ease of testing after installation (straight cool only)
- **Compatible** with fossil fuel, electric heat, mercury or electronic thermostats

If other than the standard features listed above are needed, customize your application by choosing from the following options.

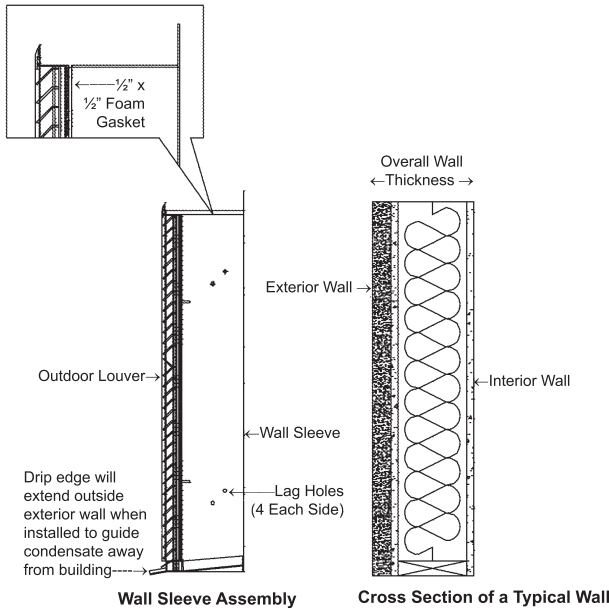
OPTIONS	X	OPTIONS	X
• Supplemental Electric Heat 5, 7.5, 10kw (15kw for 36,000 Btuh)	<input type="checkbox"/>	• Return Air Access Panel W/Disposable Air Filter	<input type="checkbox"/>
• 265/277V (Contact Factory for Availability)	<input type="checkbox"/>	• Painted Condenser Louver	<input type="checkbox"/>
		• Remote Thermostat (Mercury Bulb or Digital)	<input type="checkbox"/>

Important Note: You must circle or mark the specifications for:
• Capacity • Straight Cool or Heat Pump • Voltage • Electric Heat or Hydronic Heat

Model	Btuh		Efficiency		Electric Heat			Hydrocoil Performance					Max. HACR Breaker		Dimensions			Weight (lbs.)																		
	Cooling	Heating (VPHP)	EER	COP (VPHP)	Heater Size	Volts	Watts	HT Amps	CFM	H ₂ O Temp	Inlet H ₂ O gpm (°F)	Btuh	Head Loss ft H ₂ O	Outlet Air Temp (°F)	Outlet Water Temp (°F)	Without Electric Heat	With Electric Heat		Width (in.)	Height (in.)	Depth (in.)															
																					Heat Pump	Straight Cool														
30	30,000	29,800	9.2	2.4	5kw	208	4,089	19.7	1,000	160°	1	2,0644	.1	87°	118°	35*	35	28	52	21.4	24.5	245														
						230	5,000	21.7			2	3,2092	.4	97°	127°								3	3,6613	.8	101°	135°									
						230	7,500	32.6			4	3,9419	1.5	104°	140°								1	2,6534	.1	92°	126°									
						230	8,178	39.3			2	3,9461	.4	104°	140°								2	3,9461	.4	104°	140°									
						230	10,000	43.5			3	4,4950	.8	109°	150°								3	4,4950	.8	109°	150°									
						230	15,000	65.2			5.2	5,0980	2.4	114°	160°								5.2	5,0980	2.4	114°	160°									
					36	36,000	35,600	9.8		2.7	5kw	208	4,089	19.7	1,200			160°	1	2,1201	.1		84°	117°	40	40	28	56	21.4	28.0	285					
												230	5,000	21.7					2	3,3645	.4		94°	126°								3	3,8695	.8	97°	134°
												230	7,500	32.6					4.3	4,2668	1.7		100°	140°								1	2,7277	.1	89°	124°
												230	8,178	39.3					2	4,1390	.4		99°	138°								2	4,1390	.4	99°	138°
												230	10,000	43.5					3	4,7531	.8		104°	148°								3	4,7531	.8	104°	148°
												230	12,268	59.0					5.2	5,5245	2.8		110°	160°								5.2	5,5245	2.8	110°	160°

*VP-30 Requires 35 amp breaker for compressor circuit

*VP-36 Requires 40 amp breaker for compressor (circuit #1)



Cross Section of a Typical Wall

TO DETERMINE WALL SLEEVE DEPTH, USE THE FOLLOWING FORMULA:

Wall Sleeve Depth = Overall Wall Thickness - 1.25" (Louver Depth)

EXAMPLE: If your overall wall thickness is 10" then your wall sleeve depth would be 8.75" (10" - 1.25" = 8.75")

Fill In Your Information Here:

_____ - 1.25" = _____
Overall Wall Thickness Wall Sleeve Depth

Company Name _____

Authorized Signature _____

Date _____

EMI Signature _____

Date _____



Tested/Rated In
Accordance With ARI
Standard 390

An **ECR International Brand**

Manufactured by:
ENVIROMASTER INTERNATIONAL LLC
5780 Success Drive, Rome, NY 13440
Phone: 1-800-228-9364
Fax: 1-800-232-9364
Email: info@retroaire.com